

# M5 Junction 10 Improvements Scheme

## Classification of Roads and Traffic Regulations Plans - Part 2 TR010063 - APP 2.8

Regulation 5 (2) (o)

Planning Act 2008

Infrastructure Planning (Applications: Prescribed Forms and Procedure) Regulations 2009

Volume 2

November 2024

THIS PAGE IS LEFT INTENTIONALLY BLANK

## Infrastructure Planning Planning Act 2008

### The Infrastructure Planning (Applications: Prescribed Forms and Procedure) Regulations 2009

#### M5 Junction 10 Improvements Scheme Development Consent Order 202[X]

---

#### Classification of Roads and Traffic Regulations Plans - Part 2

---

<b>Regulation Number:</b>	Regulation 5 (2) (o)
<b>Planning Inspectorate Scheme Reference</b>	TR010063
<b>Application Document Reference</b>	TR010063 – APP 2.8
<b>Author:</b>	M5 Junction 10 Improvements Scheme Project Team

<b>Version</b>	<b>Date</b>	<b>Status of Version</b>
Rev 0	October 2023	DCO Application
Rev 1	November 2024	Deadline 10

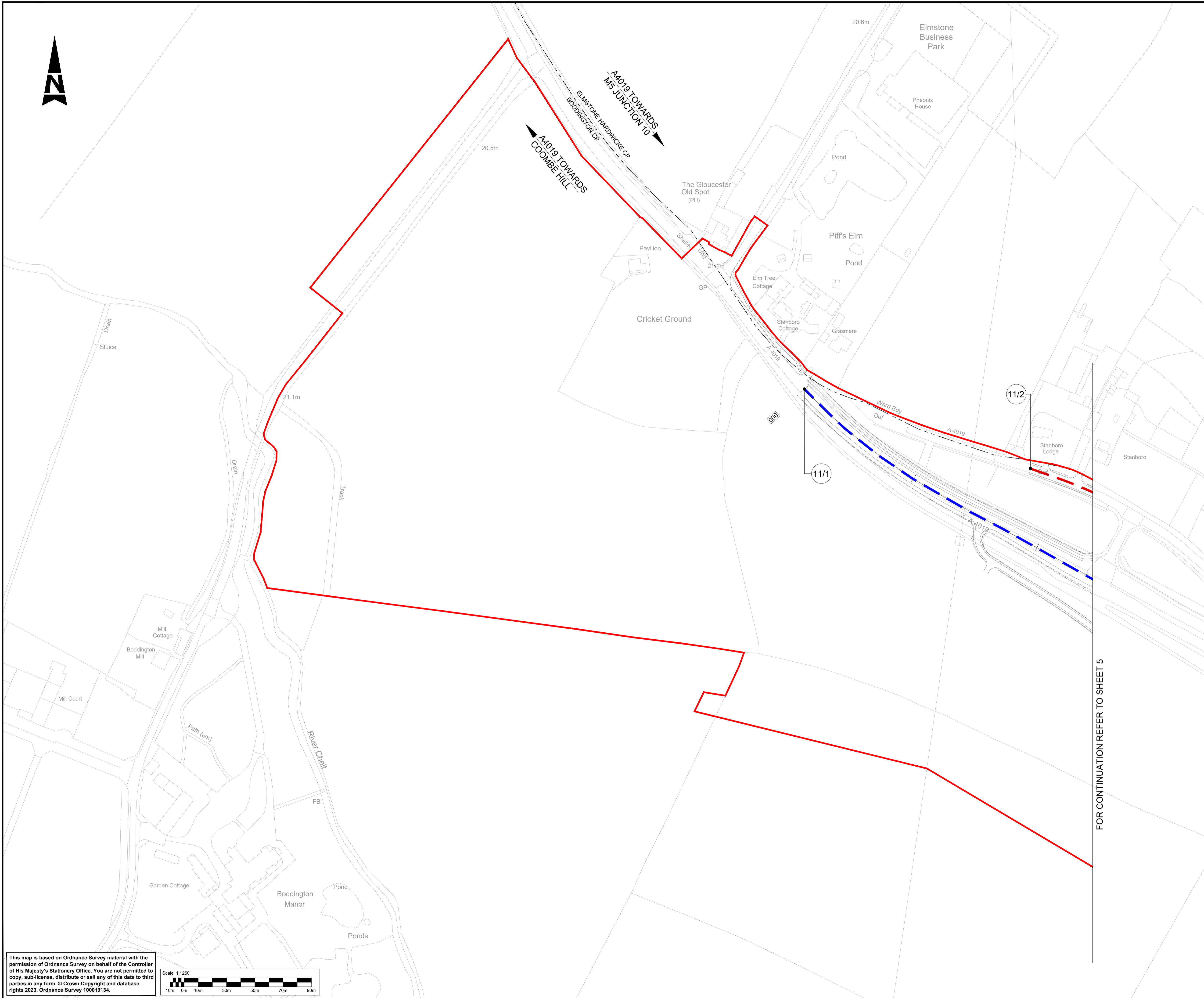
# 1. Schedule of Plans included in the application

## 1.1. List of drawings in Part 1

Document title	Document number	Version
Classification of Roads Plans Regulation 5(2)(o) Key Plan	TR010063 – APP 2.8	<del>C02_C04</del>
Classification of Roads Plans Regulation 5(2)(o) Sheet 1 of 16	TR010063 – APP 2.8	C01
Classification of Roads Plans Regulation 5(2)(o) Sheet 2 of 16	TR010063 – APP 2.8	C01
Classification of Roads Plans Regulation 5(2)(o) Sheet 3 of 16	TR010063 – APP 2.8	C01
Classification of Roads Plans Regulation 5(2)(o) Sheet 4 of 16	TR010063 – APP 2.8	<del>C02_C04</del>
Classification of Roads Plans Regulation 5(2)(o) Sheet 5 of 16	TR010063 – APP 2.8	<del>C02_C04</del>
Classification of Roads Plans Regulation 5(2)(o) Sheet 6 of 16	TR010063 – APP 2.8	<del>C02_C04</del>
Classification of Roads Plans Regulation 5(2)(o) Sheet 7 of 16	TR010063 – APP 2.8	C01
Classification of Roads Plans Regulation 5(2)(o) Sheet 8 of 16	TR010063 – APP 2.8	C01
Classification of Roads Plans Regulation 5(2)(o) Sheet 9 of 16	TR010063 – APP 2.8	C01
Classification of Roads Plans Regulation 5(2)(o) Sheet 10 of 16	TR010063 – APP 2.8	C01

## 1.2. List of drawings in Part 2

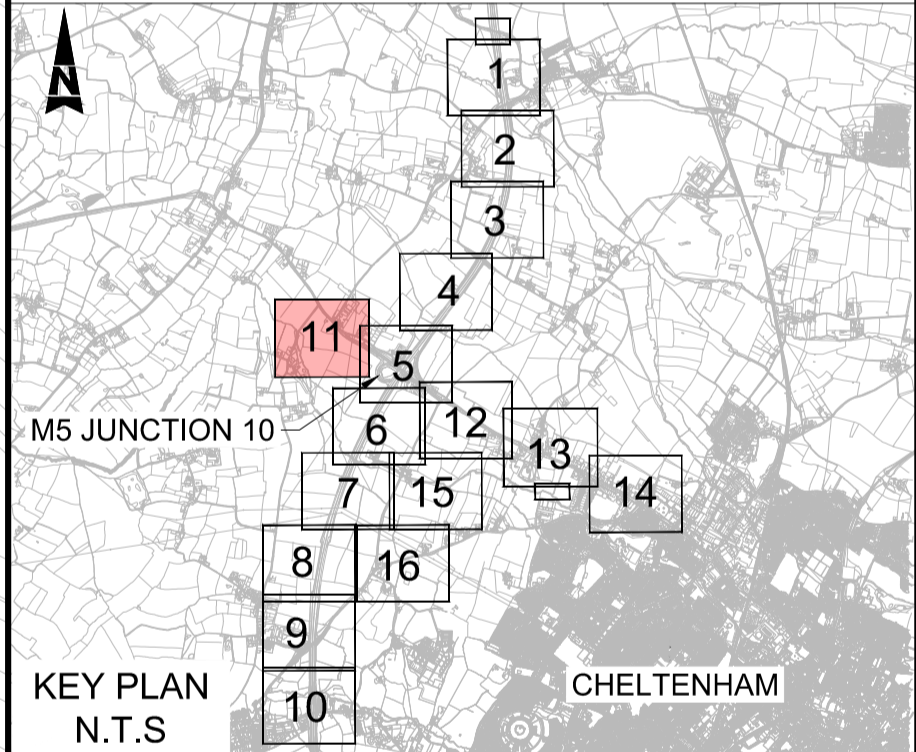
Document title	Document number	Version
Classification of Roads Plans Regulation 5(2)(o) Sheet 11 of 16	TR010063 – APP 2.8	C01
Classification of Roads Plans Regulation 5(2)(o) Sheet 12 of 16	TR010063 – APP 2.8	<del>C02 C04</del>
Classification of Roads Plans Regulation 5(2)(o) Sheet 13 of 16	TR010063 – APP 2.8	C01
Classification of Roads Plans Regulation 5(2)(o) Sheet 14 of 16	TR010063 – APP 2.8	C01
Classification of Roads Plans Regulation 5(2)(o) Sheet 15 of 16	TR010063 – APP 2.8	<del>C02 C04</del>
Classification of Roads Plans Regulation 5(2)(o) Sheet 16 of 16	TR010063 – APP 2.8	<del>C02 C04</del>



**NOTES:**

1. THE CLASSIFICATION OF ROADS PLANS SHOULD BE READ IN CONJUNCTION WITH THE DEVELOPMENT CONSENT ORDER AND OTHER APPLICATION PLANS, IN PARTICULAR THE ARTICLE OF, AND SCHEDULE TO, THE DEVELOPMENT CONSENT ORDER, WHICH PROVIDE FOR THE CLASSIFICATION OF ROADS.
2. THE ROADS IDENTIFIED ON THIS PLAN ARE TO BE CLASSIFIED (OR RE-CLASSIFIED) AS PROVIDED FOR IN THE DEVELOPMENT CONSENT ORDER.

- KEY:**
- DEVELOPMENT CONSENT ORDER (DCO) LIMITS
  - - - PARISH BOUNDARY
  - SPECIAL ROADS
  - CLASSIFIED A ROADS
  - CLASSIFIED B ROADS
  - UNCLASSIFIED ROADS
  - (41) POINT NUMBER FOR CLASSIFICATION OF ROADS SCHEDULE
  - XXXX MAINLINE CHAINAGE
  - EXISTING ORDNANCE SURVEY DATA



FOR CONTINUATION REFER TO SHEET 5

Description						
Status	Revision	Drawn	Checked	Reviewed	Authorised	Issue Date
Description						
Status	Revision	Drawn	Checked	Reviewed	Authorised	Issue Date
Description						
Status	Revision	Drawn	Checked	Reviewed	Authorised	Issue Date
Description						
Status	Revision	Drawn	Checked	Reviewed	Authorised	Issue Date
Description						
FIRST SUBMISSION						
Status	Revision	Drawn	Checked	Reviewed	Authorised	Issue Date
A1	C01	NKRP	CJ	HC	BM	18/10/23
Drawing Suitability						Status
APPROVED - PUBLISHED						A1

Project Title  
**M5 Junction 10 Improvements Scheme**

Drawing Title  
**CLASSIFICATION OF ROADS PLANS  
REGULATION 5(2)(o)  
SHEET 11 OF 16**

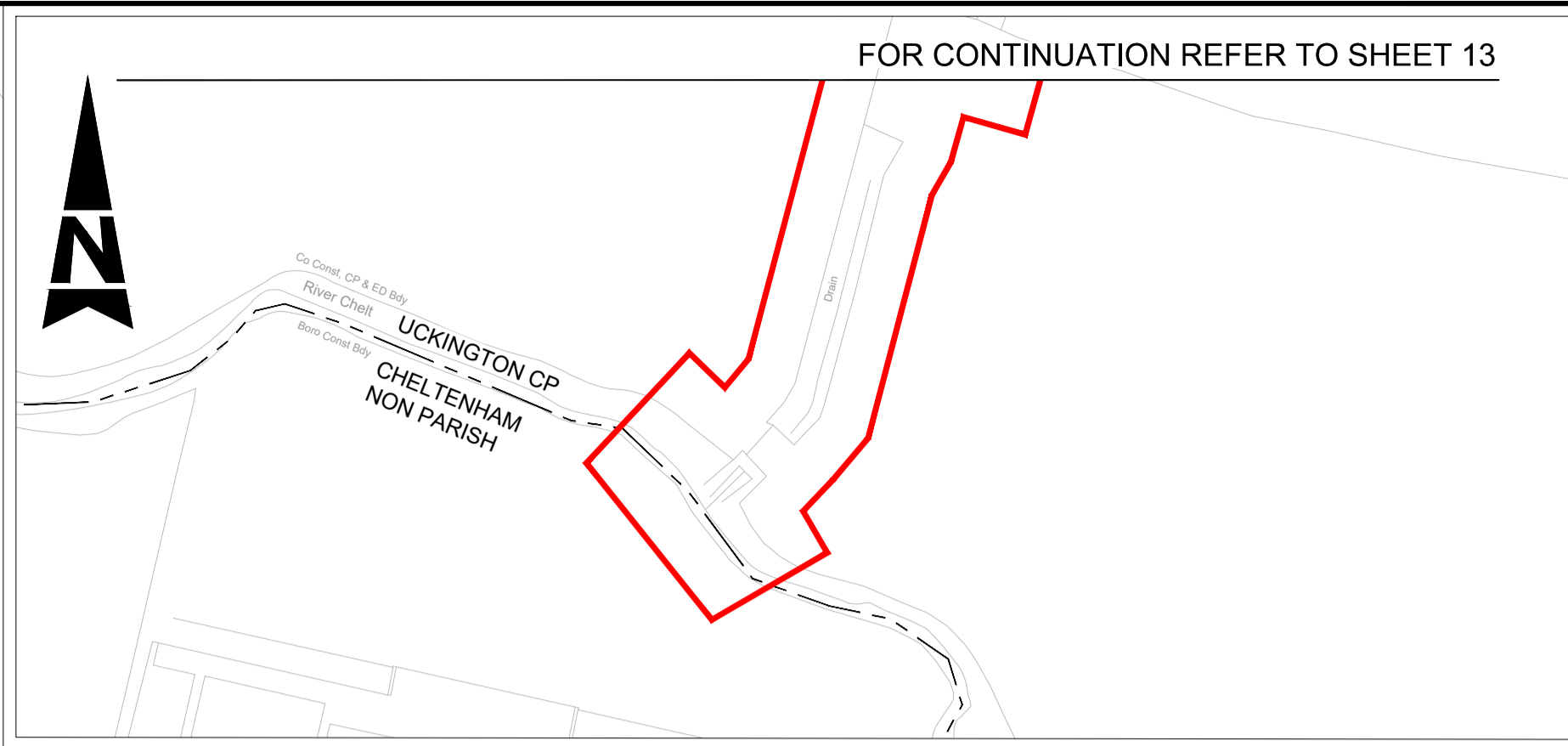
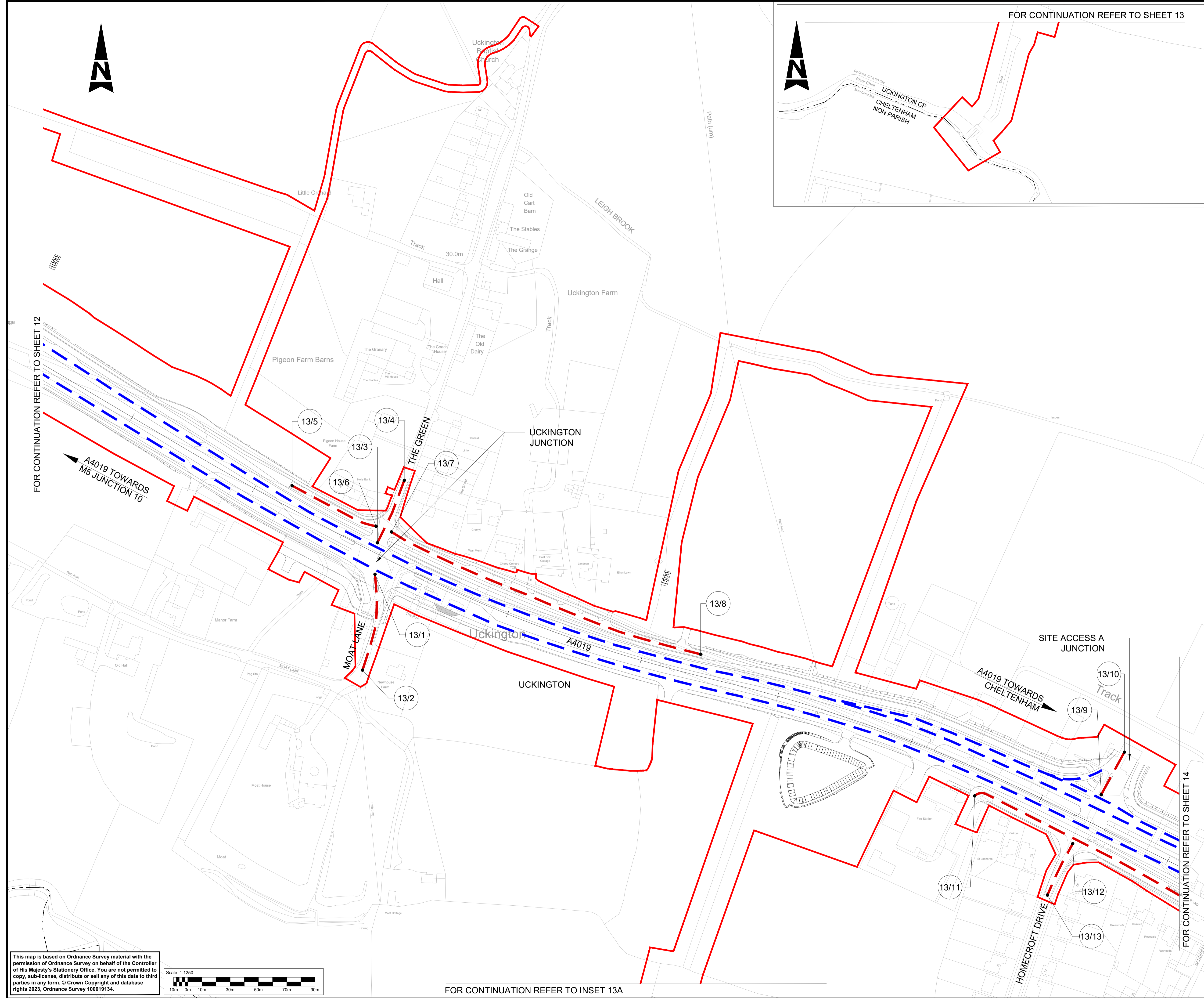
Drawing Number  
**TR010063/APP/2.8**

Original Size: **A1** Scale: 1:1250 Project Ref. No.: 5197035 Sheet: 11 of 16 Rev: **C01**

This map is based on Ordnance Survey material with the permission of Ordnance Survey on behalf of the Controller of His Majesty's Stationery Office. You are not permitted to copy, sub-license, distribute or sell any of this data to third parties in any form. © Crown Copyright and database rights 2023, Ordnance Survey 100019134.



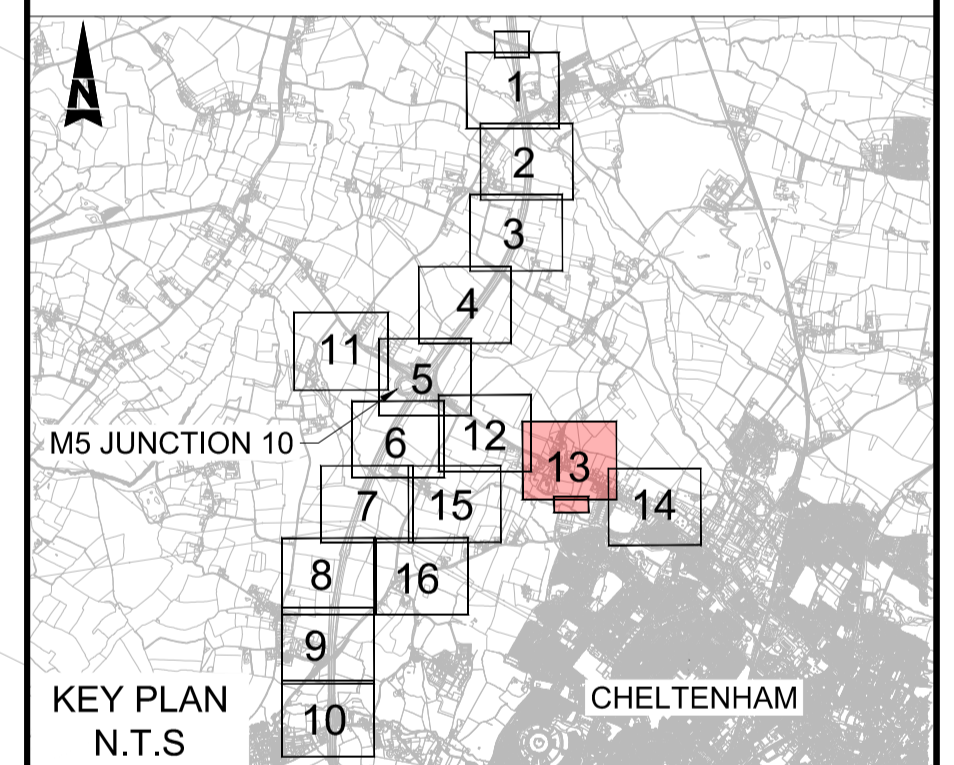




**NOTES:**

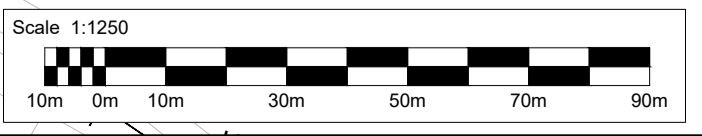
1. THE CLASSIFICATION OF ROADS PLANS SHOULD BE READ IN CONJUNCTION WITH THE DEVELOPMENT CONSENT ORDER AND OTHER APPLICATION PLANS, IN PARTICULAR THE ARTICLE OF, AND SCHEDULE TO, THE DEVELOPMENT CONSENT ORDER, WHICH PROVIDE FOR THE CLASSIFICATION OF ROADS.
2. THE ROADS IDENTIFIED ON THIS PLAN ARE TO BE CLASSIFIED (OR RE-CLASSIFIED) AS PROVIDED FOR IN THE DEVELOPMENT CONSENT ORDER.

- KEY:**
- DEVELOPMENT CONSENT ORDER (DCO) LIMITS
  - - - PARISH BOUNDARY
  - SPECIAL ROADS
  - CLASSIFIED A ROADS
  - CLASSIFIED B ROADS
  - - - UNCLASSIFIED ROADS
  - (41) POINT NUMBER FOR CLASSIFICATION OF ROADS SCHEDULE
  - XXXX MAINLINE CHAINAGE
  - EXISTING ORDNANCE SURVEY DATA



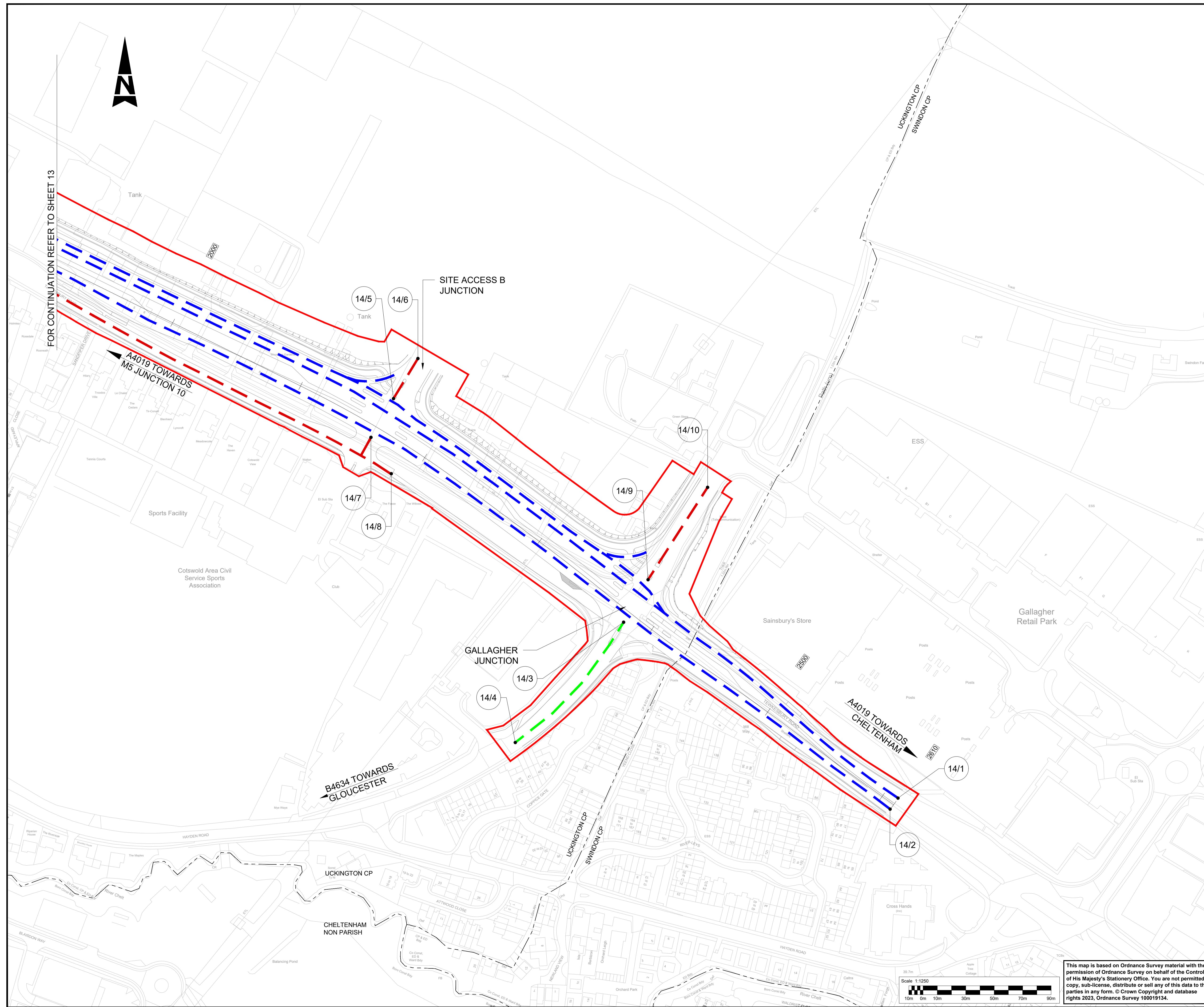
Description						
Status	Revision	Drawn	Checked	Reviewed	Authorised	Issue Date
Description						
Status	Revision	Drawn	Checked	Reviewed	Authorised	Issue Date
Description						
Status	Revision	Drawn	Checked	Reviewed	Authorised	Issue Date
Description						
Status	Revision	Drawn	Checked	Reviewed	Authorised	Issue Date
FIRST SUBMISSION						
Status	Revision	Drawn	Checked	Reviewed	Authorised	Issue Date
A1	C01	NKRP	CJ	HC	BM	18/10/23
Drawing Suitability						Status
APPROVED - PUBLISHED						A1
Project Title						
M5 Junction 10 Improvements Scheme						
Drawing Title						
CLASSIFICATION OF ROADS PLANS REGULATION 5(2)(o) SHEET 13 OF 16						
Drawing Number						
TR010063/APP/2.8						
Original Size:	A1	Scale:	1:1250	Project Ref. No.:	5197035	Sheet: 13 of 16
						Rev: C01

This map is based on Ordnance Survey material with the permission of Ordnance Survey on behalf of the Controller of His Majesty's Stationery Office. You are not permitted to copy, sub-license, distribute or sell any of this data to third parties in any form. © Crown Copyright and database rights 2023, Ordnance Survey 100019134.



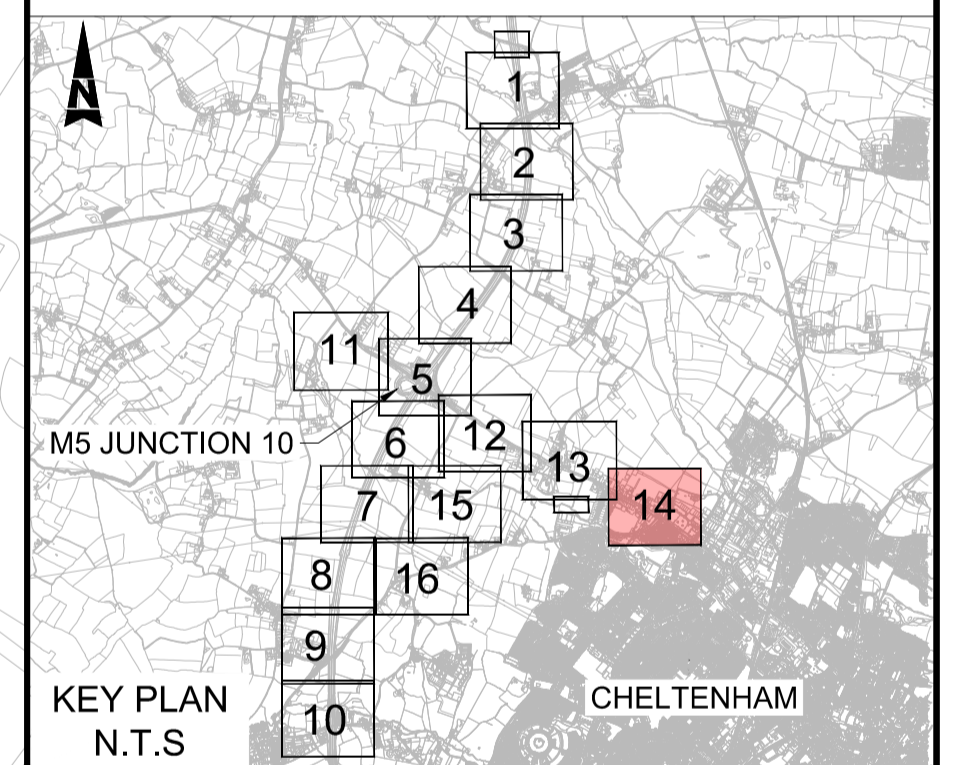
FOR CONTINUATION REFER TO INSET 13A





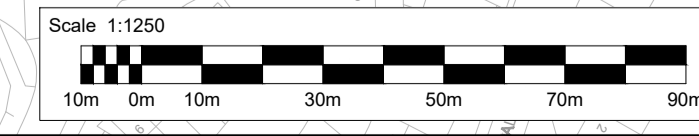
- NOTES:**
1. THE CLASSIFICATION OF ROADS PLANS SHOULD BE READ IN CONJUNCTION WITH THE DEVELOPMENT CONSENT ORDER AND OTHER APPLICATION PLANS, IN PARTICULAR THE ARTICLE OF, AND SCHEDULE TO, THE DEVELOPMENT CONSENT ORDER, WHICH PROVIDE FOR THE CLASSIFICATION OF ROADS.
  2. THE ROADS IDENTIFIED ON THIS PLAN ARE TO BE CLASSIFIED (OR RE-CLASSIFIED) AS PROVIDED FOR IN THE DEVELOPMENT CONSENT ORDER.

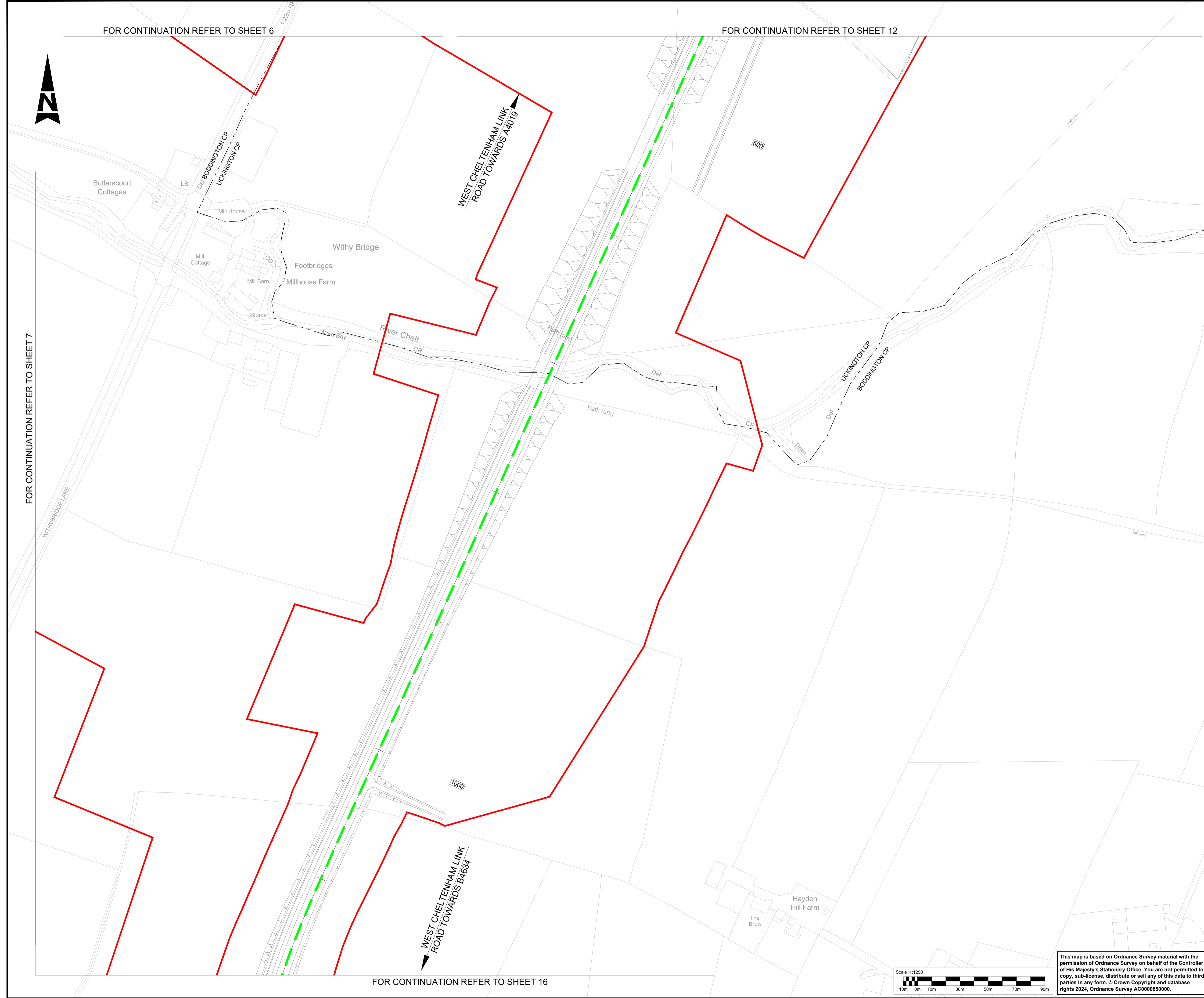
- KEY:**
- DEVELOPMENT CONSENT ORDER (DCO) LIMITS
  - - - PARISH BOUNDARY
  - - - SPECIAL ROADS
  - - - CLASSIFIED A ROADS
  - - - CLASSIFIED B ROADS
  - - - UNCLASSIFIED ROADS
  - (4/1) POINT NUMBER FOR CLASSIFICATION OF ROADS SCHEDULE
  - XXXX MAINLINE CHAINAGE
  - EXISTING ORDNANCE SURVEY DATA



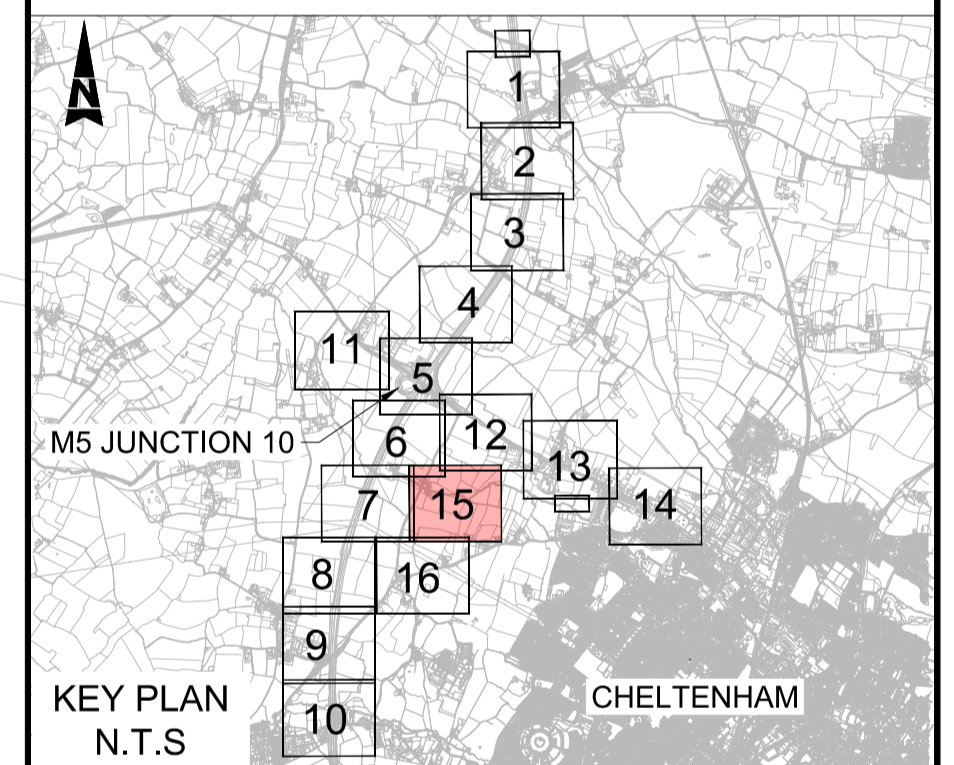
Description						
Status	Revision	Drawn	Checked	Reviewed	Authorised	Issue Date
Description						
Status	Revision	Drawn	Checked	Reviewed	Authorised	Issue Date
Description						
Status	Revision	Drawn	Checked	Reviewed	Authorised	Issue Date
Description						
FIRST SUBMISSION						
Status	Revision	Drawn	Checked	Reviewed	Authorised	Issue Date
A1	C01	NKRP	CJ	HC	BM	18/10/23
Drawing Suitability						Status
APPROVED - PUBLISHED						A1
Project Title						
M5 Junction 10 Improvements Scheme						
Drawing Title						
CLASSIFICATION OF ROADS PLANS REGULATION 5(2)(o) SHEET 14 OF 16						
Drawing Number						
TR010063/APP/2.8						
Original Scale:	A1	Scale:	1:1250	Project Ref. No.:	5197035	Sheet: 14 of 16
						Rev: C01

This map is based on Ordnance Survey material with the permission of Ordnance Survey on behalf of the Controller of His Majesty's Stationery Office. You are not permitted to copy, sub-license, distribute or sell any of this data to third parties in any form. © Crown Copyright and database rights 2023, Ordnance Survey 100019134.



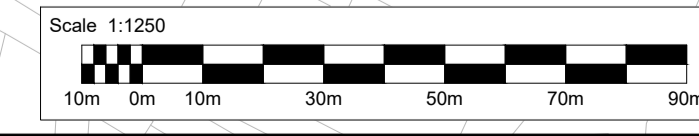


- NOTES:**
1. THE CLASSIFICATION OF ROADS PLANS SHOULD BE READ IN CONJUNCTION WITH THE DEVELOPMENT CONSENT ORDER AND OTHER APPLICATION PLANS, IN PARTICULAR THE ARTICLE OF, AND SCHEDULE TO, THE DEVELOPMENT CONSENT ORDER, WHICH PROVIDE FOR THE CLASSIFICATION OF ROADS.
  2. THE ROADS IDENTIFIED ON THIS PLAN ARE TO BE CLASSIFIED (OR RE-CLASSIFIED) AS PROVIDED FOR IN THE DEVELOPMENT CONSENT ORDER.
- KEY:**
- DEVELOPMENT CONSENT ORDER (DCO) LIMITS
  - - - PARISH BOUNDARY
  - SPECIAL ROADS
  - CLASSIFIED A ROADS
  - CLASSIFIED B ROADS
  - UNCLASSIFIED ROADS
  - (41) POINT NUMBER FOR CLASSIFICATION OF ROADS SCHEDULE
  - XXXX MAINLINE CHAINAGE
  - EXISTING ORDNANCE SURVEY DATA



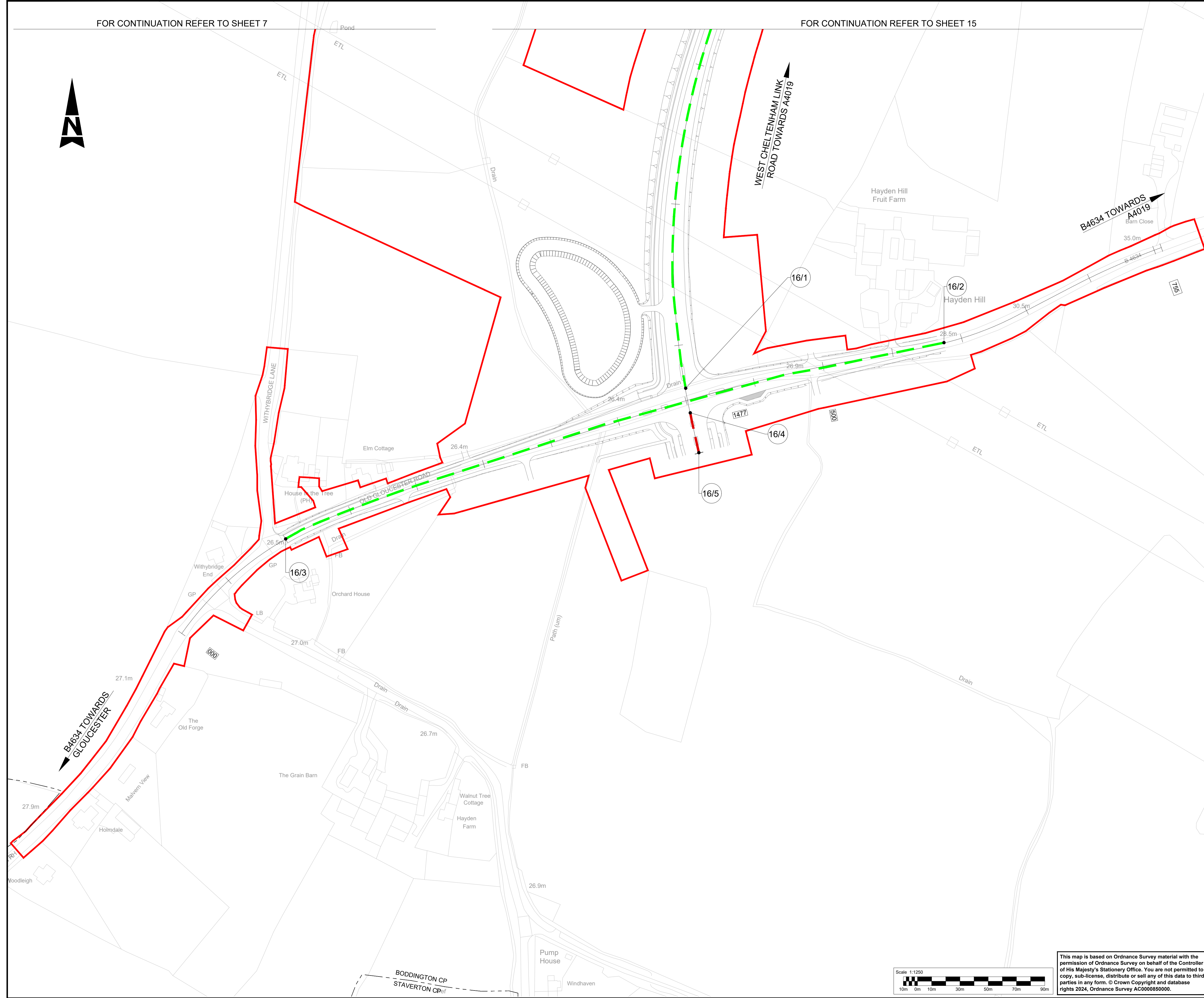
Description	Status	Revision	Drawn	Checked	Reviewed	Authorised	Issue Date
NOT USED	A1	C01	YP	YP	YP	YP	02/07/24
CHANGE APPLICATION 2 AMENDMENTS INCLUDED	A1	C02	VN	CG	CJ	LJ	24/11/24
Drawing Suitability	APPROVED - PUBLISHED						Status
Project Title	M5 Junction 10 Improvements Scheme						
Drawing Title	CLASSIFICATION OF ROADS PLANS REGULATION 5(2)(o) SHEET 15 OF 16						
Drawing Number	TR010063/APP/2.8						
Original Size	A1	Scale: 1:1250	Project Ref. No: 5228847	Sheet: 15 of 16	Rev: C02		

This map is based on Ordnance Survey material with the permission of Ordnance Survey on behalf of the Controller of His Majesty's Stationery Office. You are not permitted to copy, sub-license, distribute or sell any of this data to third parties in any form. © Crown Copyright and database rights 2024, Ordnance Survey AC0000850000.



FOR CONTINUATION REFER TO SHEET 7

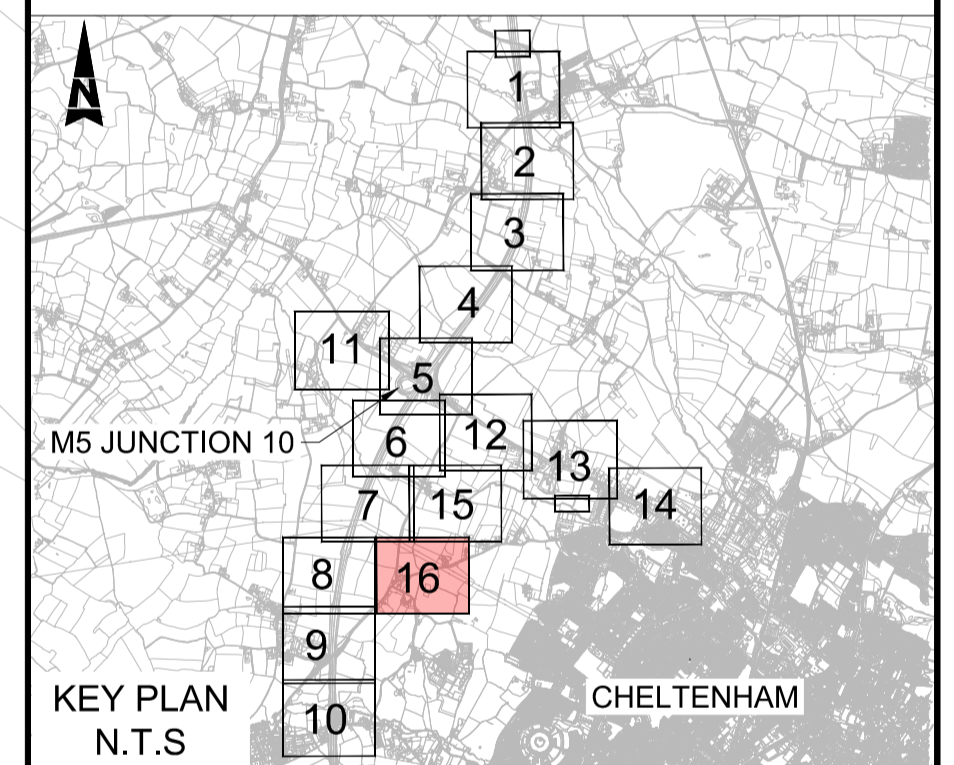
FOR CONTINUATION REFER TO SHEET 15



**NOTES:**

1. THE CLASSIFICATION OF ROADS PLANS SHOULD BE READ IN CONJUNCTION WITH THE DEVELOPMENT CONSENT ORDER AND OTHER APPLICATION PLANS, IN PARTICULAR THE ARTICLE OF, AND SCHEDULE TO, THE DEVELOPMENT CONSENT ORDER, WHICH PROVIDE FOR THE CLASSIFICATION OF ROADS.
2. THE ROADS IDENTIFIED ON THIS PLAN ARE TO BE CLASSIFIED (OR RE-CLASSIFIED) AS PROVIDED FOR IN THE DEVELOPMENT CONSENT ORDER.

- KEY:**
- DEVELOPMENT CONSENT ORDER (DCO) LIMITS
  - - - PARISH BOUNDARY
  - SPECIAL ROADS
  - CLASSIFIED A ROADS
  - CLASSIFIED B ROADS
  - UNCLASSIFIED ROADS
  - (4/1) POINT NUMBER FOR CLASSIFICATION OF ROADS SCHEDULE
  - XXXX MAINLINE CHAINAGE
  - EXISTING ORDNANCE SURVEY DATA



KEY PLAN N.T.S

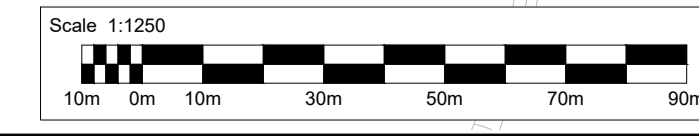
Description	Status	Revision	Drawn	Checked	Reviewed	Authorised	Issue Date
NOT USED	A1	C01	YP	YP	YP	YP	02/07/24
CHANGE APPLICATION 2 AMENDMENTS INCLUDED	A1	C02	VN	CG	CJ	LJ	24/11/24
Drawing Suitability	APPROVED - PUBLISHED						Status
							A1

Project Title  
**M5 Junction 10 Improvements Scheme**

Drawing Title  
**CLASSIFICATION OF ROADS PLANS  
REGULATION 5(2)(o)  
SHEET 16 OF 16**

Drawing Number  
**TR010063/APP/2.8**

Original Size: <b>A1</b>	Scale: 1:1250	Project Ref. No: 5228847	Sheet: 16 of 16	Rev: <b>C02</b>
--------------------------	---------------	--------------------------	-----------------	-----------------



This map is based on Ordnance Survey material with the permission of Ordnance Survey on behalf of the Controller of His Majesty's Stationery Office. You are not permitted to copy, sub-license, distribute or sell any of this data to third parties in any form. © Crown Copyright and database rights 2024, Ordnance Survey AC0000850000.

# AtkinsRéalis

5th Floor, Block 5  
Shire Hall  
Bearland  
Gloucester  
GL1 2TH

Tel: +44 (0) 8000 514 514